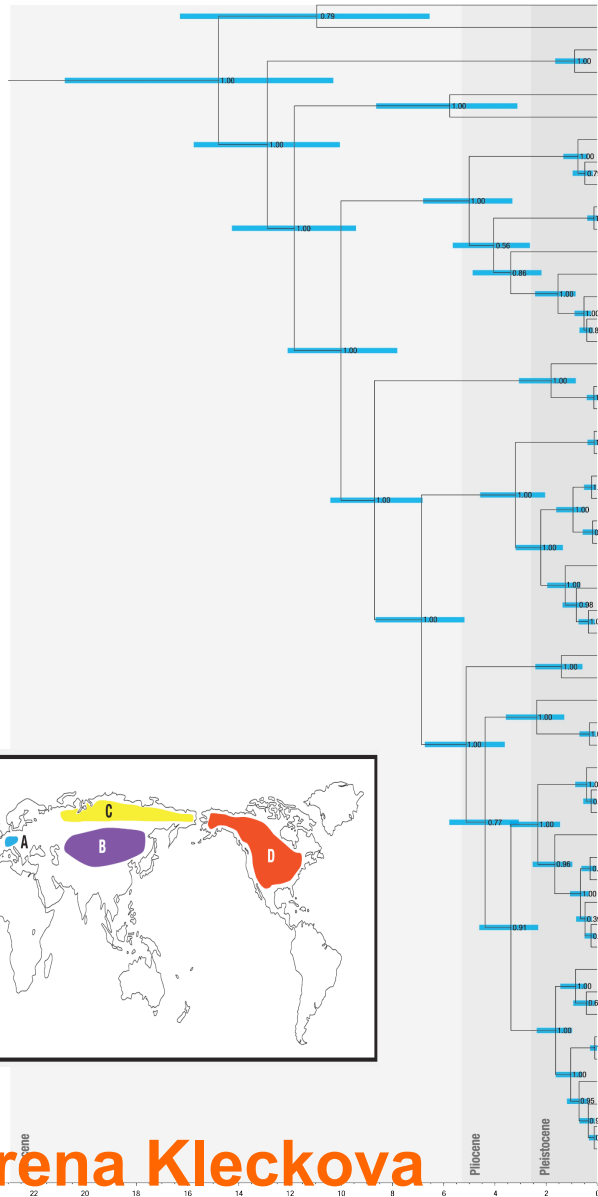
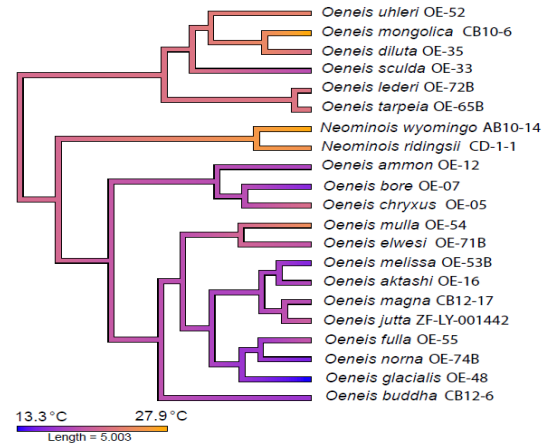
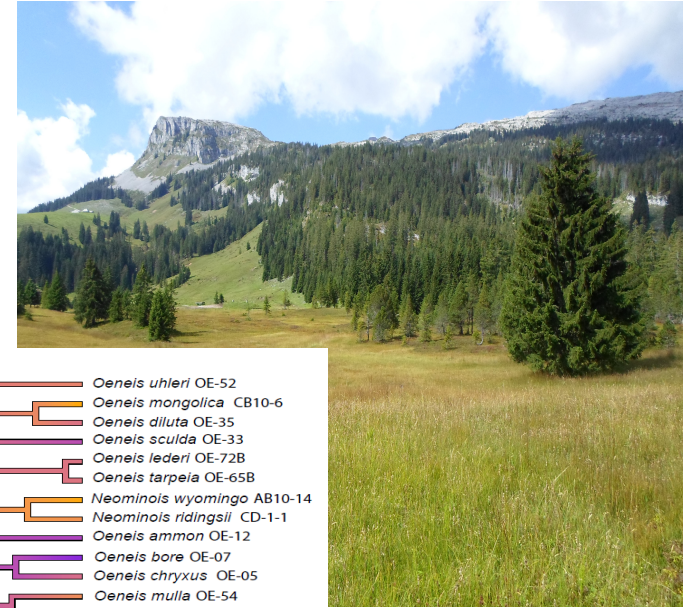


Ecology and evolution of mountain butterflies



- Hipparchia statilinus* (Hübner, 1766) EW25-24
- Melanargia galathea* (Linnaeus, 1758) EW24-17
- Paroenis pumilus* (C. & R. Felder, [1867]) CB12-1
- Paroenis palaearticus* (Staudinger, 1889)
- Karanasa pamira* (Staudinger, 1887) CP-AC23-32
- Karanasa bolorica* (Grim-Gishmald, 1888) NW166-10
- Oeneis tarpeia* (Pallas, 1771) AB7-6
- Oeneis tarpeia* (Pallas, 1771) OE-65B
- Oeneis lederi* Alpheraky, 1897 OE-72B
- Oeneis sculda* (Eversmann, 1851) CB12-19
- Oeneis sculda* (Eversmann, 1851) OE-33
- Oeneis uhleri* Hübner, [1819] OE-52
- Oeneis diluta* Likhtanov, 1994 OE-35
- Oeneis mongolica* (Daxthuber, 1876) CB10-5
- Oeneis mongolica* (Daxthuber, 1876) CB10-3
- Oeneis mongolica* (Daxthuber, 1876) CB10-6
- Neominois ridingsii* (Eowwies, 1865) CD-1-1
- Neominois wyomingo* (Scott, 1998) AB10-15
- Neominois wyomingo* (Scott, 1998) AB10-14
- Oeneis ammon* Ewies, 1899 OE-13
- Oeneis ammon* Ewies, 1899 OE-12
- Oeneis chryxus* (E. Doubleday, [1849]) OE-03
- Oeneis chryxus* (E. Doubleday, [1849]) OE-01
- Oeneis chryxus* (E. Doubleday, [1849]) OE-02
- Oeneis chryxus* (E. Doubleday, [1849]) OE-05
- Oeneis bore* (Schneider, 1792) OE-07
- Oeneis bore* (Schneider, 1792) ZF-LY-000536
- Oeneis bore* (Schneider, 1792) OE-27
- Oeneis bore* (Schneider, 1792) CB12-3
- Oeneis buddha* Grim-Gishmald, 1891 CB12-5
- Oeneis buddha* Grim-Gishmald, 1891 CB12-6
- Oeneis mulla* Staudinger, 1881 OE-54
- Oeneis elwesi* Staudinger, 1901 OE-46
- Oeneis elwesi* Staudinger, 1901 OE-71B
- Oeneis glacialis* (Müll., 1783) OE-48
- Oeneis glacialis* (Müll., 1783) OE-49
- Oeneis glacialis* (Müll., 1783) OE-50
- Oeneis fulla* (Eversmann, 1851) OE-55
- Oeneis norma* (Thunberg, 1791) OE-10
- Oeneis norma* (Thunberg, 1791) 12-16
- Oeneis norma* (Thunberg, 1791) OE-74B
- Oeneis norma* (Thunberg, 1791) OE-18
- Oeneis norma* (Thunberg, 1791) CB12-18
- Oeneis magna* Graeser, 1888 CB12-17
- Oeneis jutta* (Hübner, 1806) EW4-1
- Oeneis jutta* (Hübner, 1806) ZF-LY-001442
- Oeneis aktashi* Likhtanov, 1984 OE-69B
- Oeneis aktashi* Likhtanov, 1984 OE-16
- Oeneis melissa* (Fabricius, 1775) OE-53B
- Oeneis melissa* (Fabricius, 1775) OE-29
- Oeneis melissa* (Fabricius, 1775) OE-04
- Oeneis melissa* (Fabricius, 1775) OE-23

- Subgenus **Protoeneis** Gösselnov 2001
- tarpeia** sp. group
- Subgenus **urda** sp. group
- Subgenus **Neominois** stat. nov.
- Subgenus **Deneis** Hübner, [1819]
- bore** sp. group
- buddha** sp. group
- hora** sp. group
- polixenes** sp. group



Irena Kleckova

Biology Centre of the Academy of Sciences of the Czech Republic
Institute of Entomology, Ceske Budejovice