

Accessing the Evomics

2016 AMI



Goto:

<http://console.aws.amazon.com>

Sign up for a new account.

Enter your credit card details.

Find: **ami-2f6f3445** under Community AMIs

Launch an instance – it won't work with a
"Free Tier"

Look carefully at Pricing Information -

<https://aws.amazon.com/ec2/pricing/>



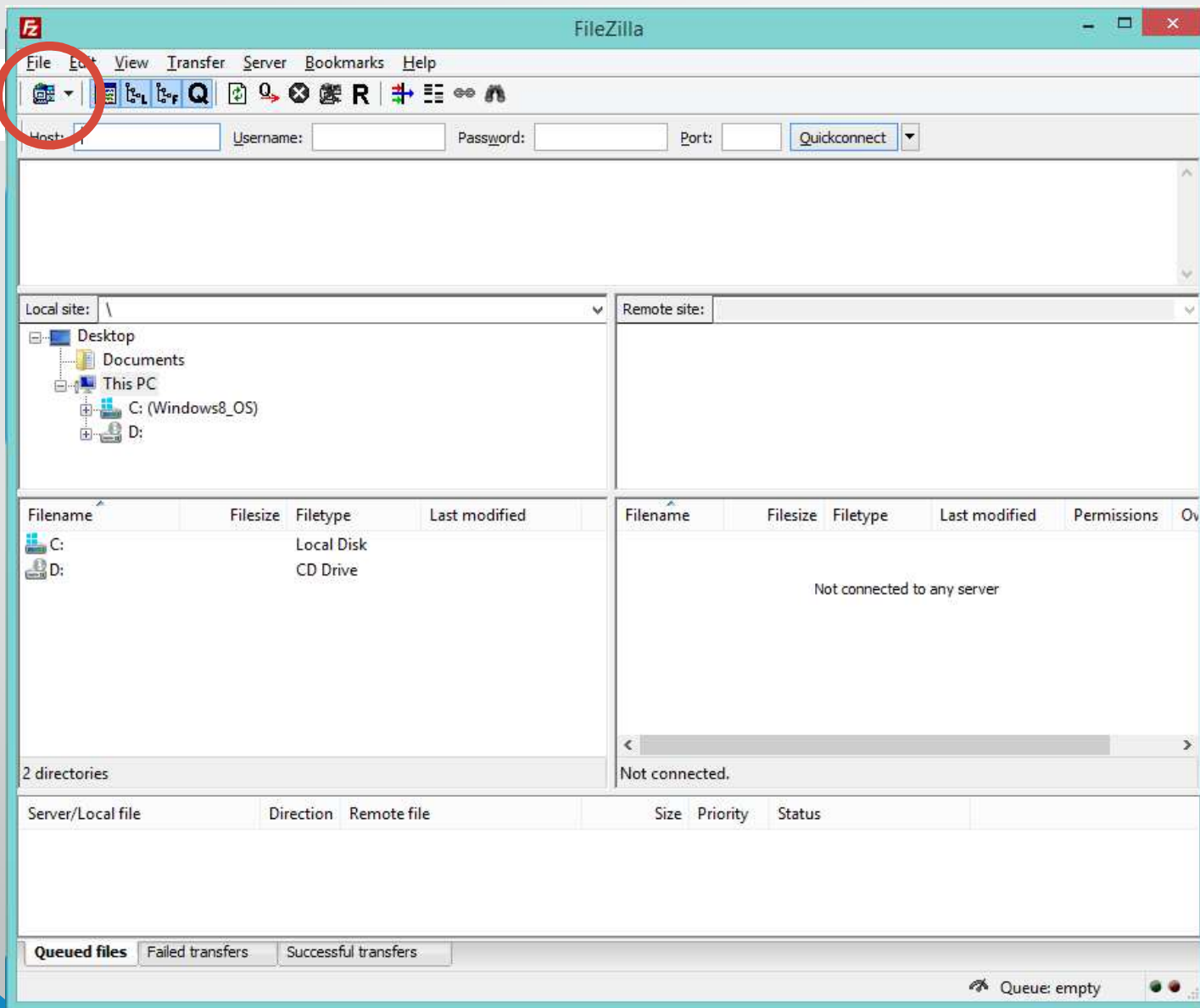
Downloading your Data

From the AMI

Using FileZilla on your Local Machine

- Go to https://filezilla-project.org/download.php?show_all=1
- Download the package for your local machine: e.g. Mac OS X or Windows
- Ubuntu: `sudo apt-get install filezilla`
- Other programs exists: e.g. WinSCP (Win) and Fugu (OS X)
- Install and open the program

Click here →



1. Click "New Site"

The screenshot shows the 'Site Manager' dialog box with the following fields and annotations:

- Host:** ec2.amazon.com (An arrow points to this field from annotation 2: "Enter your 'Public DNS' here")
- Port:** 22 (An arrow points to this field from annotation 3: "Change to port '22'")
- Protocol:** SFTP - SSH File Transfer Protocol (An arrow points to this dropdown menu from annotation 4: "Change Protocol to 'SFTP'")
- Logon Type:** Normal (An arrow points to this dropdown menu from annotation 5: "Change 'Logon Type' to 'Normal'")
- User:** ubuntu (An arrow points to this text field from annotation 6: "Change 'User' to 'ubuntu'")
- Password:** [masked with dots] (An arrow points to this field from annotation 7: "Enter your password. If you didn't change it, it is still 'evomics2015'")

At the bottom of the dialog, there are buttons for "Connect", "OK", and "Cancel".

2. Enter your "Public DNS" here

3. Change to port "22"

4. Change Protocol to "SFTP"

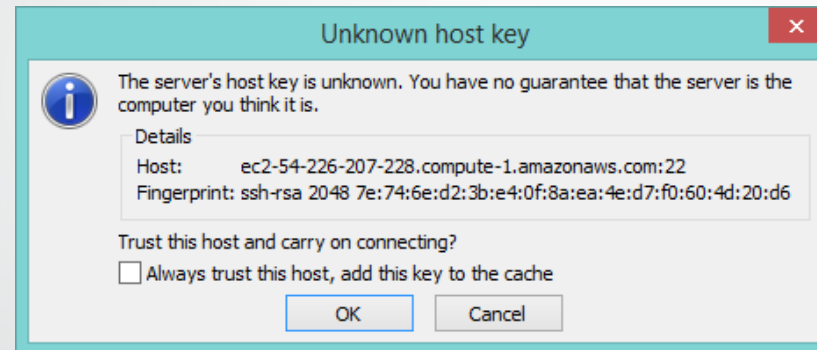
5. Change "Logon Type" to "Normal"

6. Change "User" to "ubuntu"

7. Enter your password. If you didn't change it, it is still "evomics2015"

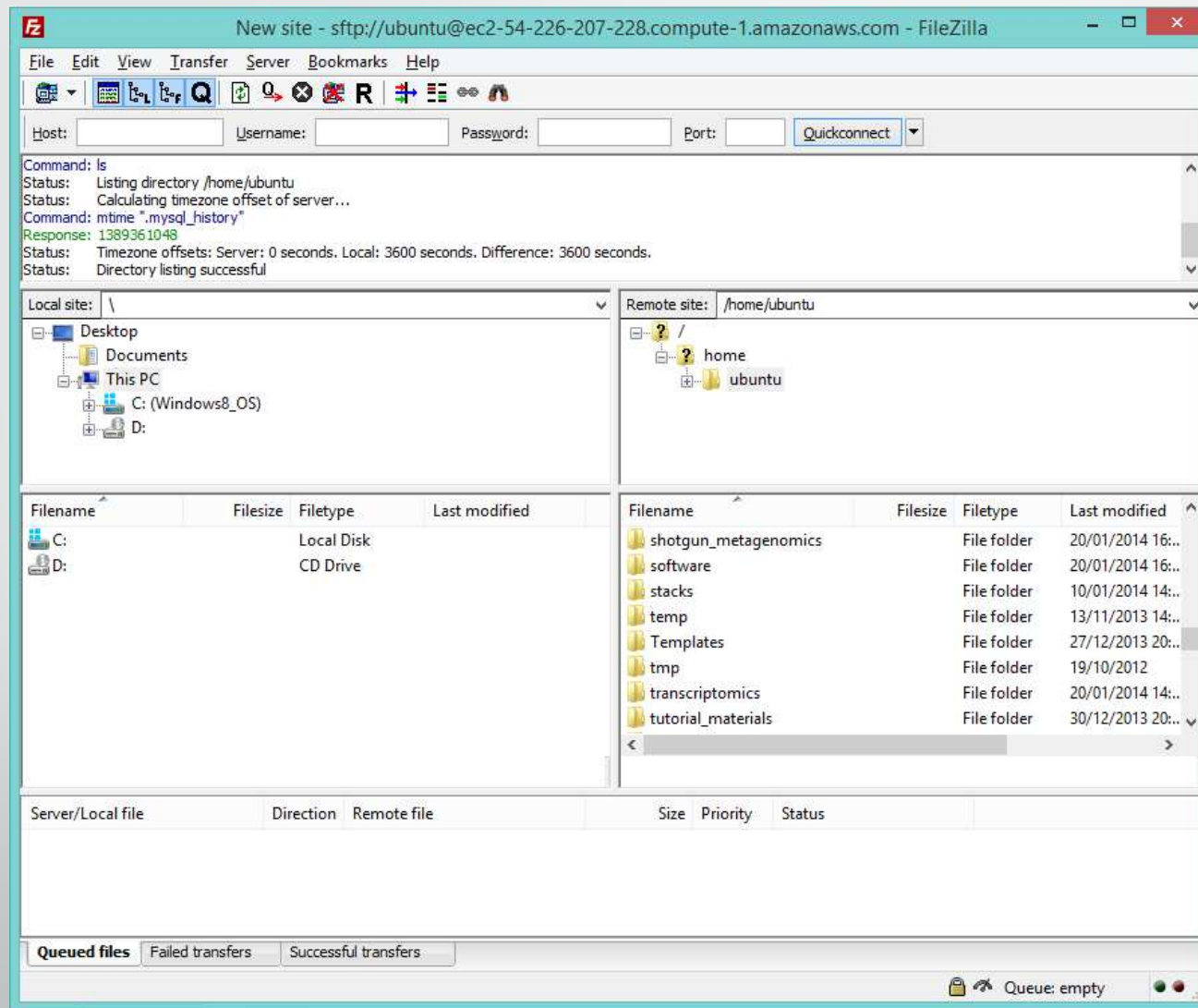
Finally: Click "Connect"

Accept the “Unknown host key” message



- Click, “always trust this host....”
- Click “OK”
- This will only happen once....

- This side shows your LOCAL file system
- Choose a logical folder to save your files.
- You can see a hierarchical list of your directories at the top
- Below that you can see the contents of any folder



- This side shows your REMOTE file system (your files on the AMI)
- Similarly you see your folder structure and files
- Right-click (command/secondary click) on a folder or file and select download.
- It will appear in the bottom window (queue) and download to your local computer.

SCP

- A great tutorial for SCP - <https://linuxacademy.com/blog/linux/ssh-and-scp-howto-tips-tricks/>