

How to transfer files with filezilla



Your
computer
folders

The screenshot shows the FileZilla application window. The 'Local site' pane on the left is highlighted with a red box and contains a tree view of the local file system. The 'Remote site' pane on the right is empty and displays the message 'Not connected to any server'. The bottom pane shows a list of files being transferred between the local and remote sites.

Local site: /home/mmarcet/Documents/courses/evomics2019/

- Presentacions
- Programs
- courses
 - course_evomics
 - evomics2019
 - gene_annotation
 - session2
 - session5
 - gene_annotation

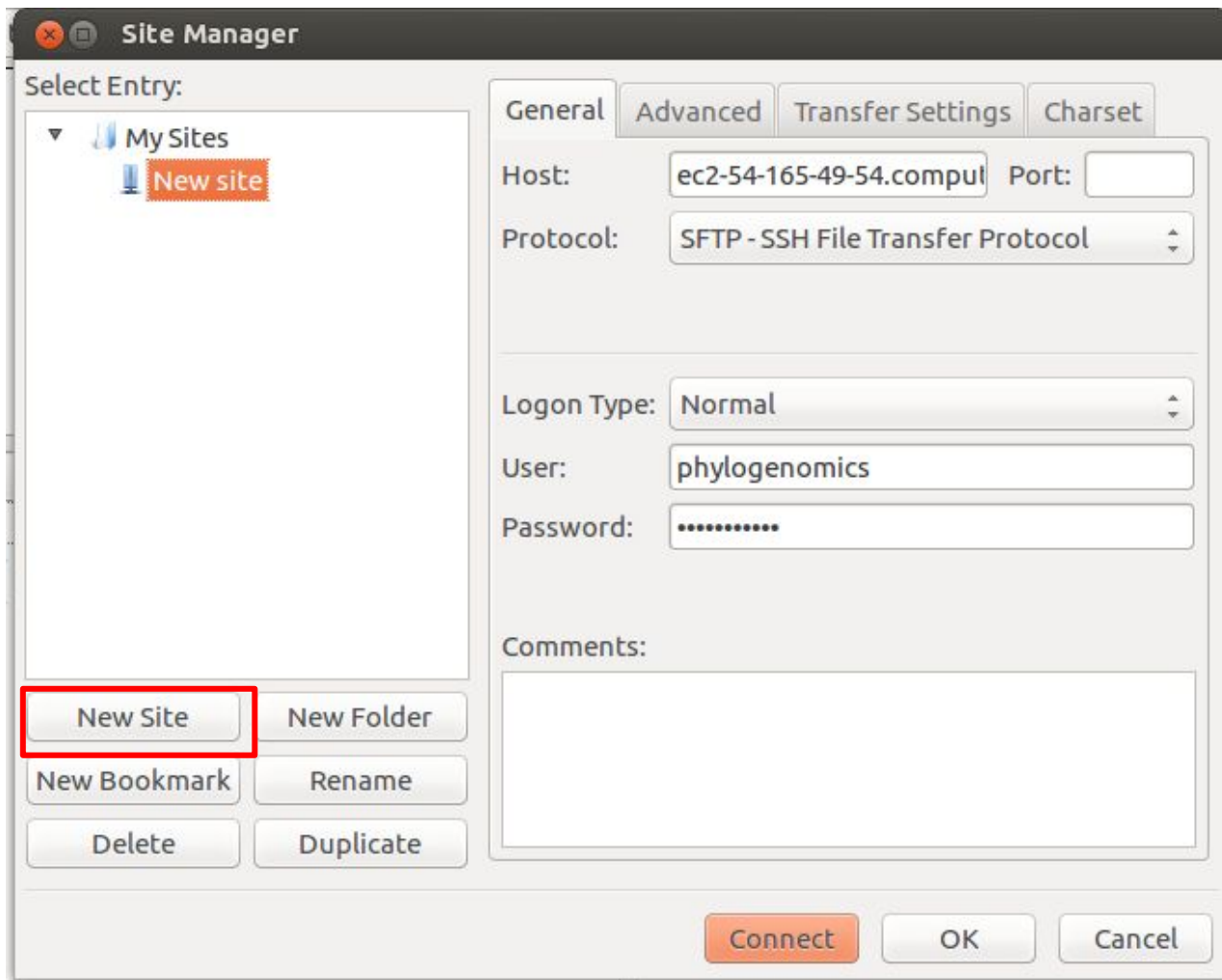
Filename	Filesize	Filetype	Last modified
..			
orthology_L...		Directory	20/01/19 13:24...
trimming_L...		Directory	19/01/19 12:12...
orthology_L...	877,0 KB	gz-file	20/01/19 13:24...
trimming_L...	11,8 KB	gz-file	20/01/19 15:44...

Remote site: Not connected to any server

Server/Local file	Directory	Remote file	Size	Priority	Status
sftp://phylogenomi...					
/home/mmarcet/D...	<-	/home/phylogenomics/...	2,2 KB	Normal	
/home/mmarcet/D...	<-	/home/phylogenomics/...	2,7 KB	Normal	

Queued files (25) Failed transfers Successful transfers

Queue: 882,9 KB



Site Manager

Select Entry:

My Sites
New site

New Site

New Folder

New Bookmark

Rename

Delete

Duplicate

General

Advanced

Transfer Settings

Charset

Host: ec2-54-165-49-54.comput Port:

Protocol: SFTP - SSH File Transfer Protocol

Logon Type: Normal

User: phylogenomics

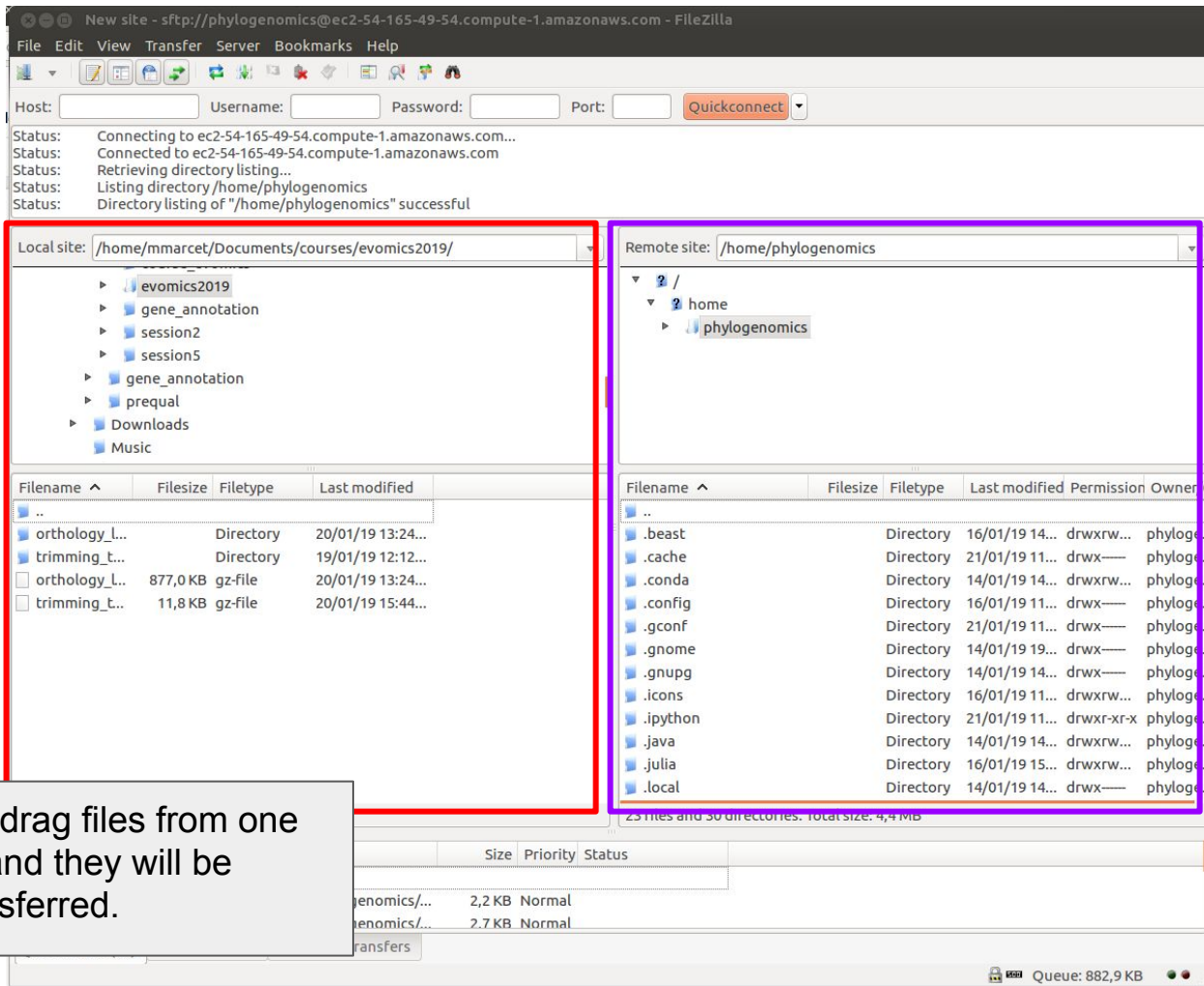
Password:

Comments:

Connect

OK

Cancel



Your computer folders

The instances folders

Now you can just drag files from one side to the other and they will be automatically transferred.